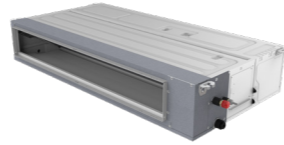


## Mid ESP Duct



M type

## Specification-50/60HZ DC fan motor

Model	Indoor		ARVMD-H45/NR1DM	ARVMD-H56/NR1DM	ARVMD-H71/NR1DM	ARVMD-H80/NR1DM	ARVMD-H90/NR1DM
Capacity	Cooling	kW	4.5	5.6	7.1	8.0	9.0
	Heating	kW	5.6	6.3	8.0	9.0	10.0
Electric Data	Power Supply	V~,Hz,Ph	220~240,50/60,1	220~240,50/60,1	220~240,50/60,1	220~240,50/60,1	220~240,50/60,1
	Rated Power	W	110	110	125	125	150
Performance	Air Flow Volume(Tu/Hi/Mid/Low)m <sup>3</sup> /h		1000/920/790/700	1000/920/790/700	1680/1350/1100/950	1680/1350/1100/950	1710/1400/1120/950
	Noise Level(Hi/Mid/Low)	dB(A)	39/37/35	39/37/35	40/38/36	41/39/37	41/39/37
	External Static Pressure(ESP)	Pa	50(0-150)	50(0-150)	50(0-150)	50(0-150)	50(0-150)
Dimension (WxDxH)	Net	mm	1000x700x245	1000x700x245	1000x700x245	1000x700x245	1000x700x245
	Packing	mm	1230*830*300	1230*830*300	1230*830*300	1230*830*300	1230*830*300
Weight	Net/Gross	kg	30/36	30/36	30/36	30/36	32/38
	Liquid Side	mm(inch)	9.52	9.52	9.52	9.52	9.52
Pipe Diameter	Gas Side	mm(inch)	15.88	15.88	15.88	15.88	15.88
	Drainage	mm(inch)	R3/4in(DN20)	R3/4in(DN20)	R3/4in(DN20)	R3/4in(DN20)	R3/4in(DN20)
Stuffing Quantity	20/40/40H	unit	72/151/164	72/151/164	72/151/164	72/151/164	72/151/164

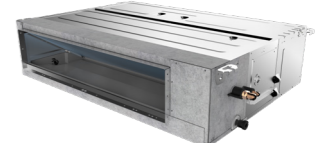
## Specification-50/60HZ DC fan motor

Model	Indoor		ARVMD-H100/NR1DM	ARVMD-H112/NR1DM	ARVMD-H125/NR1DM	ARVMD-H140/NR1DM	ARVMD-H150/NR1DM
Capacity	Cooling	kW	10.0	11.2	12.5	14.0	15.0
	Heating	kW	11.2	12.5	14.0	16.0	17.0
Electric Data	Power Supply	V~,Hz,Ph	220~240,50/60,1	220~240,50/60,1	220~240,50/60,1	220~240,50/60,1	220~240,50/60,1
	Rated Power	W	150	230	230	230	250
Performance	Air Flow Volume(Tu/Hi/Mid/Low)m <sup>3</sup> /h		1710/1400/1120/950	2300/1900/1600/1400	2300/1900/1600/1400	2300/1900/1600/1400	2400/2000/1700/1500
	Noise Level(Hi/Mid/Low)	dB(A)	42/40/38	44/42/40	44/42/40	44/42/40	45/43/41
	External Static Pressure(ESP)	Pa	50(0-150)	50(0-150)	50(0-150)	50(0-150)	50(0-150)
Dimension (WxDxH)	Net	mm	1000x700x245	1400x700x245	1400x700x245	1400x700x245	1400x700x245
	Packing	mm	1230*830*300	1630x830x300	1630x830x300	1630x830x300	1630x830x300
Weight	Net/Gross	kg	32/38	41/48	41/48	41/48	41/48
	Liquid Side	mm(inch)	9.52	9.52	9.52	9.52	9.52
Pipe Diameter	Gas Side	mm(inch)	15.88	15.88	15.88	15.88	15.88
	Drainage	mm(inch)	R3/4in(DN20)	R3/4in(DN20)	R3/4in(DN20)	R3/4in(DN20)	R3/4in(DN20)
Stuffing Quantity	20/40/40H	unit	72/151/164	49/98/112	49/98/112	49/98/112	49/98/112

## Notes:

- Cooling Capacity: Indoor temperature 27°C DB/ 19°C WB; Outdoor temperature: 35°C DB/ 24°C WB.
- Heating Capacity: Indoor temperature 20°C DB; Outdoor temperature: 7°C DB/ 6°C WB.
- Piping Length: Equivalent piping length: 7.5m, level difference: 0m.
- Sound level is measured at 1.4m below the unit.
- The above designs and specifications are subject to change without prior notice. Final specifications please refer to technical specification provided by sales representative.

## Mid ESP Duct



M type

## Specification-50Hz AC fan motor

Model	Indoor		ARVMD-H45/4R1M	ARVMD-H56/4R1M	ARVMD-H71/4R1M	ARVMD-H80/4R1M	ARVMD-H90/4R1M
Capacity	Cooling	kW	4.5	5.6	7.1	8.0	9.0
	Heating	kW	5.6	6.3	8.0	9.5	10.0
Electric Data	Power Supply	V~,Hz,Ph	220~240,50,1	220~240,50,1	220~240,50,1	220~240,50,1	220~240,50,1
	Rated Power	W	215	215	215	215	220
Performance	Air Flow Volume(Tu/Hi/Mid/Low)m <sup>3</sup> /h		1000/800/660/520	1000/800/660/520	1500/1200/930/730	1500/1200/930/730	1500/1210/950/750
	Noise Level(Hi/Mid/Low)	dB(A)	42/39/36	42/39/36	43/40/37	43/40/37	44/41/38
	External Static Pressure(ESP)	Pa	50	50	50	50	50
Dimension (WxDxH)	Net	mm	1000x700x245	1000x700x245	1000x700x245	1000x700x245	1000x700x245
	Packing	mm	1230*830*300	1230*830*300	1230*830*300	1230*830*300	1230*830*300
Weight	Net/Gross	kg	30/36	30/36	30/36	30/36	32/38
	Liquid Side	mm(inch)	9.52	9.52	9.52	9.52	9.52
Pipe Diameter	Gas Side	mm(inch)	15.88	15.88	15.88	15.88	15.88
	Drainage	mm(inch)	R3/4in(DN20)	R3/4in(DN20)	R3/4in(DN20)	R3/4in(DN20)	R3/4in(DN20)
Stuffing Quantity	20/40/40H	unit	72/151/164	72/151/164	72/151/164	72/151/164	72/151/164

## Specification-50Hz AC fan motor

Model	Indoor		ARVMD-H100/4R1M	ARVMD-H112/4R1M	ARVMD-H125/4R1M	ARVMD-H140/4R1M	ARVMD-H150/4R1M
Capacity	Cooling	kW	10.0	11.2	12.5	14.0	15.0
	Heating	kW	11.2	12.5	14.0	15.5	16.5
Electric Data	Power Supply	V~,Hz,Ph	220~240,50,1	220~240,50,1	220~240,50,1	220~240,50,1	220~240,50,1
	Rated Power	W	220	310	310	310	310
Performance	Air Flow Volume(Tu/Hi/Mid/Low)m <sup>3</sup> /h		1500/1210/950/750	2100/1870/1550/1320	2100/1870/1550/1320	2100/1870/1550/1320	2100/1870/1550/1320
	Noise Level(Hi/Mid/Low)	dB(A)	44/41/38	45/42/39	45/42/39	45/42/39	46/43/40
	External Static Pressure(ESP)	Pa	50	50	50	50	50
Dimension (WxDxH)	Net	mm	1000x700x245	1400x700x245	1400x700x245	1400x700x245	1400x700x245
	Packing	mm	1230*830*300	1630x830x300	1630x830x300	1630x830x300	1630x830x300
Weight	Net/Gross	kg	32/38	43/50	43/50	43/50	43/50
	Liquid Side	mm(inch)	9.52	9.52	9.52	9.52	9.52
Pipe Diameter	Gas Side	mm(inch)	15.88	15.88	15.88	15.88	15.88
	Drainage	mm(inch)	R3/4in(DN20)	R3/4in(DN20)	R3/4in(DN20)	R3/4in(DN20)	R3/4in(DN20)
Stuffing Quantity	20/40/40H	unit	72/151/164	49/98/112	49/98/112	49/98/112	49/98/112

## Notes:

- Cooling Capacity: Indoor temperature 27°C DB/ 19°C WB; Outdoor temperature: 35°C DB/ 24°C WB.
- Heating Capacity: Indoor temperature 20°C DB; Outdoor temperature: 7°C DB/ 6°C WB.
- Piping Length: Equivalent piping length: 7.5m, level difference: 0m.
- Sound level is measured at 1.4m below the unit.
- The above designs and specifications are subject to change without prior notice. Final specifications please refer to technical specification provided by sales representative.